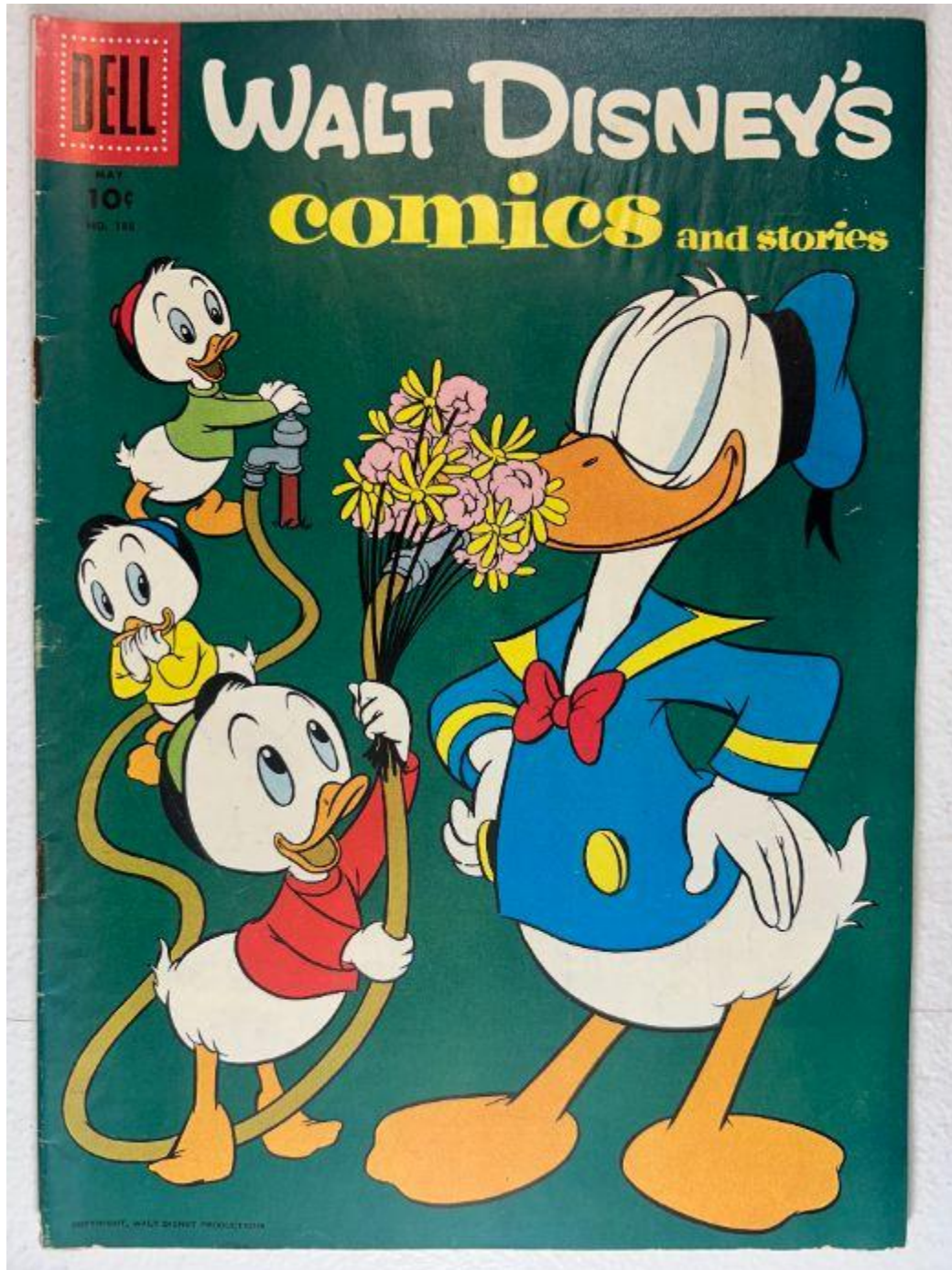


■ **Walt Disney's Comics and Stories – Vol. 16 No. 8**
(May 1954)

Evaluation Date: April 2, 2026



SUMMARY OF OBSERVATIONS

This comic retains the front cover, back cover, centerfold, all photographed interior pages, and both original staples. Interior pages display cream to light-tan paper coloration with strong ink saturation and clear linework across multiple story pages. The book presents with notably strong visual appeal overall.

Observed condition issues are limited in scope and are primarily concentrated at the **front cover lower edge** and the **spine**, where **localized abrasion, shallow cracking, and small areas of paper loss** are visible. Despite this wear, the spine remains continuous, the centerfold is attached, and the paper demonstrates retained flexibility as shown in the brittleness test. The observations below describe each area in detail based strictly on what is visible in the provided photographs.

FRONT COVER — OBSERVATIONS

Walt Disney's Comics and Stories – Vol. 16 No. 8 (May 1954)

Photo Condition & Quality:

The photograph shows the full front cover with clear visibility of all edges, corners, and the spine. Lighting is even, and surface texture, gloss, and edge wear are clearly discernible.

Observations:

The front cover exhibits **high surface gloss** and **strong color saturation**, particularly in the deep green background field and the bright yellow masthead. Ink coverage appears even, and printed outlines remain sharp and well defined.

Along the **bottom edge**, a **single abrasion zone** is visible near the center-left portion of the edge. This abrasion affects **approximately 12–18 mm of horizontal length** and penetrates **~1–2 mm upward** from the edge. Within this area, surface fibers are thinned, and a narrow strip of underlying paper is exposed.

Along the **spine edge**, light **vertical stress marks** are visible. These appear as shallow separations affecting **approximately 2–4 mm of vertical length** per instance, with openings remaining **<1 mm wide**. One localized area of **paper loss** is visible near the lower spine, affecting **approximately 3–5 mm vertically** and extending **~1–2 mm inward** from the fold.

Corner wear is present on all four corners. The **lower spine-side corner** shows rounding extending **approximately 4–6 mm** inward, while the remaining corners show rounding of **approximately 3–5 mm** without material loss.

No diagonal creases, folds, or breaks are visible across the main artwork field.

Overall Impression:

The front cover remains firmly attached and visually striking, with **high gloss and vivid color**. Measured lower-edge abrasion and limited spine-edge wear are the primary front-cover defects.

BACK COVER — OBSERVATIONS

Walt Disney's Comics and Stories – Vol. 16 No. 8 (May 1954)

Photo Condition & Quality:

The image shows the full back cover advertisement with all edges and corners visible. Surface texture and printed elements are clearly resolved.



Observations:

The back cover remains **fully intact**, with no visible paper loss. Edge wear is present along the bottom and open edges, consisting of light abrasion affecting **approximately 5–10 mm intermittently**. Corners show rounding of **approximately 3–5 mm** inward from each corner tip.

Surface inspection reveals light, evenly distributed surface soiling without staining, tide lines, or moisture-related distortion. Printed colors remain legible, and ink coverage appears consistent.

Overall Impression:

The back cover shows **minor, bounded handling wear** with no structural defects.

INTERIOR PAGES — OBSERVATIONS

Walt Disney's Comics and Stories – Vol. 16 No. 8 (May 1954)

Photo Condition & Quality:

Multiple interior pages are shown laid flat, with margins, gutters, and page edges clearly visible. Artwork and paper texture are well resolved.





Observations:

Interior pages display **cream to light-tan paper tone**, relatively light for a mid-1954 Dell issue. Color reproduction remains strong, with blues, reds, and greens retaining clarity and contrast. Black linework appears crisp and well defined.

Several pages show **slight natural waviness** along the lower margins, affecting segments of **approximately 10–20 mm** per page. This waviness does not coincide with creasing or fiber separation. Small **corner bends** are visible at some lower outer corners, extending **approximately 4–6 mm** inward. No full-thickness tears, stains, writing, or ink transfer are visible.

Overall Impression:

Interior pages are **complete, clean, and visually strong**, with only light, measurable handling wear.

CENTERFOLD — OBSERVATIONS

Walt Disney's Comics and Stories – Vol. 16 No. 8 (May 1954)

Photo Condition & Quality:

The centerfold image shows both pages and the central fold line under even lighting, with both staple locations visible.



Observations:

Both original staples pass through the centerfold. The fold line shows **mild compression** extending **approximately 1–2 mm** on either side of the fold. The paper remains continuous with no visible tearing, splitting, or missing material.

Staple perforations remain close to original size, with no enlargement exceeding **~1 mm** beyond the original hole diameter. No rust staining or discoloration extends into the surrounding centerfold paper.

Overall Impression:

The centerfold remains **securely attached and structurally intact**.

SPINE — OBSERVATIONS

Walt Disney's Comics and Stories – Vol. 16 No. 8 (May 1954)

Photo Condition & Quality:

Close-range images show the full spine length with adequate clarity to assess cracking and abrasion.



Observations:

The spine exhibits **light vertical cracking** at several points, with individual cracks affecting **approximately 2–4 mm of vertical length**. Openings remain narrow, generally **<1 mm wide**. A single area of **paper loss** is visible near the lower spine, affecting **approximately 3–5 mm** of spine length.

The spine remains continuous with no complete splits or separations. Overall alignment remains straight, with no pronounced roll visible.

Overall Impression:

The spine shows **limited, measured wear**, with shallow cracking and one small area of paper loss, while remaining structurally sound.

UPPER STAPLE — OBSERVATIONS

Walt Disney's Comics and Stories – Vol. 16 No. 8 (May 1954)

Photo Condition & Quality:

Macro image clearly shows the upper staple and surrounding paper fibers.



Observations:

The upper staple exhibits **light oxidation**, with darkened metal visible on portions of the staple surface. Adjacent paper shows discoloration extending **approximately 1–2 mm** from the staple crown. No tearing or slot enlargement beyond **~1 mm** is visible.

Overall Impression:

The upper staple remains functional, with **limited oxidation and minimal adjacent paper disturbance**.

LOWER STAPLE — OBSERVATIONS

Walt Disney's Comics and Stories – Vol. 16 No. 8 (May 1954)

Photo Condition & Quality:

Macro image shows the lower staple and adjacent paper fibers clearly.



Observations:

The lower staple shows oxidation similar in appearance to the upper staple. Surrounding paper remains intact, with no tearing or slot enlargement exceeding **~1 mm** visible.

Overall Impression:

The lower staple remains functional, with **light oxidation and no structural compromise observed.**

BRITTLINESS TEST — OBSERVATIONS

Walt Disney's Comics and Stories – Vol. 16 No. 8 (May 1954)

Photo Condition & Quality:

The image shows a page corner flexed outward with fibers clearly visible.



Observations:

The page corner flexes smoothly over an arc of **approximately 25–35 mm** without audible cracking. No fiber fracture, flaking, or splitting is visible. After release, the page partially rebounds toward flat.

Overall Impression:

The paper is **not brittle** and retains good flexibility.